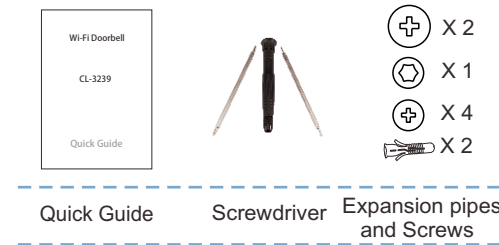
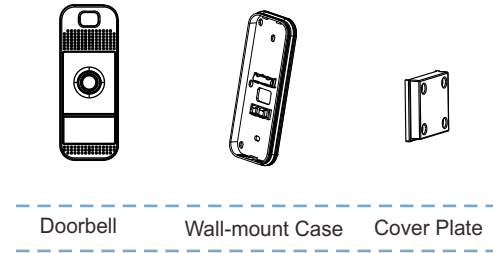


Wi-Fi Doorbell

CL-3239

Unpacking

Once you have unpacked your product, make sure that all the parts shown below are available. If any pieces are missing or broken, please promptly call your dealer.

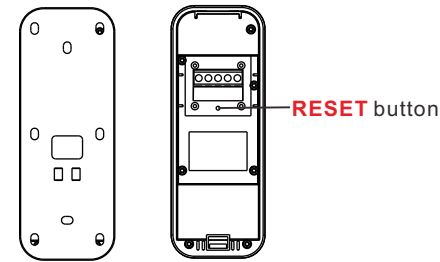
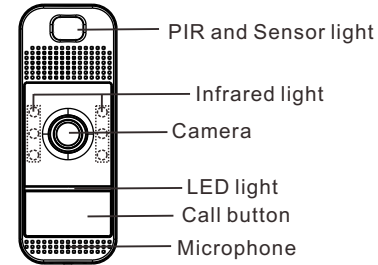


1

Introduction

The Wi-Fi doorbell is the smart video doorbell that allows you to answer your door with smartphones and tablets anytime anywhere.

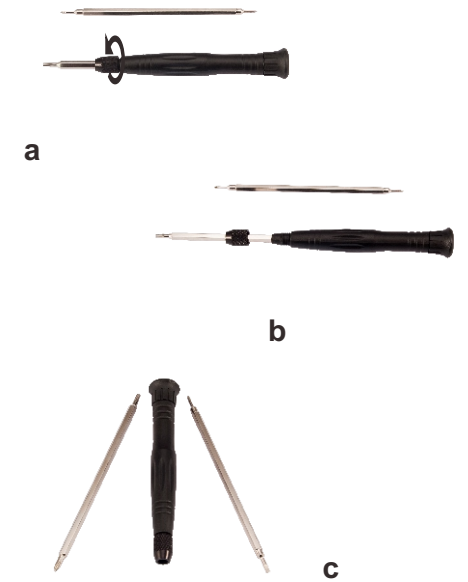
Layout



2

Screwdriver

You can replace the screwdriver's heads as per your needs.

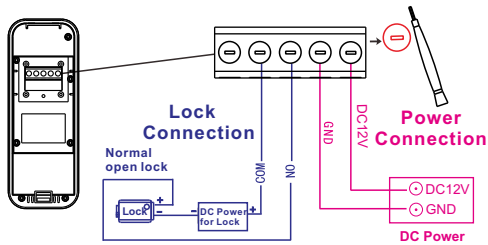


3

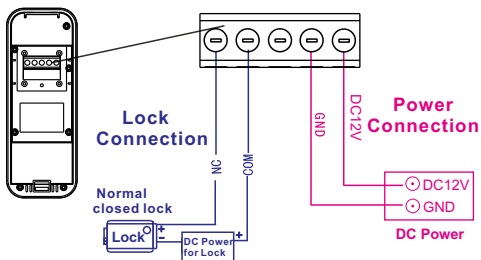
Quick Guide

Diagram For Installation

Normal Open Lock



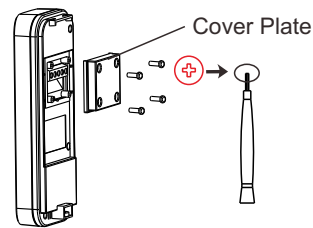
Normal Closed Lock



4

Diagram For Installation

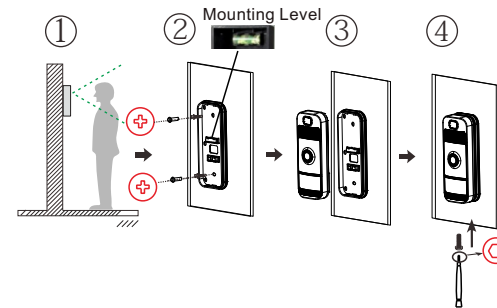
After the connection, install the cover plate to the doorbell.



5

Wall-mount Case Installation


1. Choose a proper location for the Doorbell. Be sure to consider the average height of visitors.
2. Line up the wall-mount case using the provided mounting level, install the wall-mount case and screws with the holes in the wall.
3. Install the Doorbell into the wall-mount case.
4. Drill a screw to fix and finish the installation.

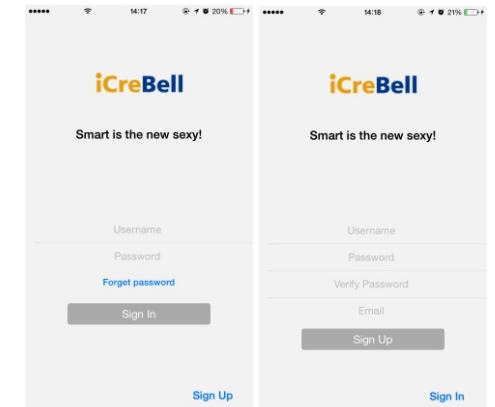


6

Operations

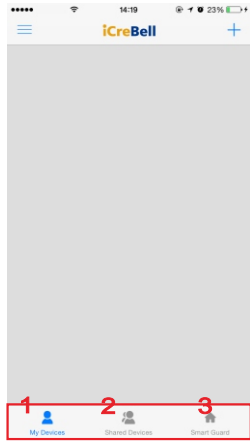
iCreBell APP Introduction

Install iCreBell APP  on your smartphones. Enter the app, follow the instruction and start registration.



7

Operations iCreBell APP Introduction

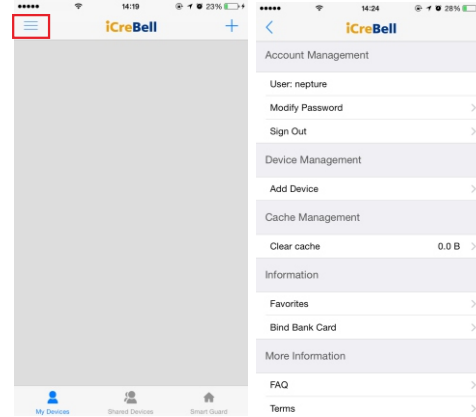


- 1. My Devices:** All iCreBells listed in this account
- 2. Shared Devices:** The iCreBells which your friends shared with you
- 3. Smart Guide:** The snapshots of this function under events' list

8

Operations iCreBell APP Introduction

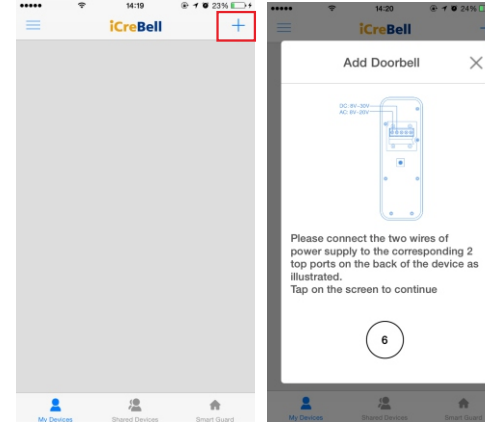
Press  to enter Account Management



9

Operations Add doorbell in iCreBell account

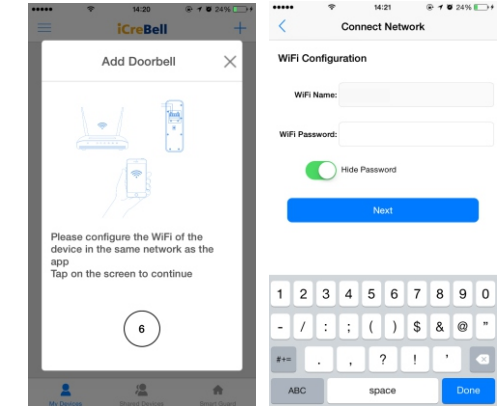
1. Press  to add iCreBell
2. Connect iCreBell with DC power



11

Operations Add doorbell in iCreBell account

3. Make sure all the devices in the same network
4. Connect to Wi-Fi network

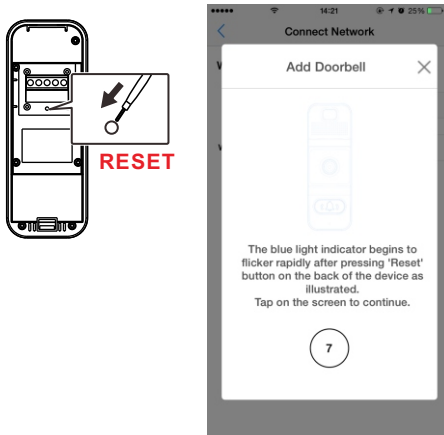


Note: Only support 2.4GHz Wi-Fi.

12

Operations Add doorbell in iCreBell account

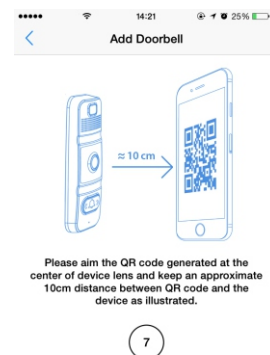
5. Using the small screwdriver to press **RESET** button to reset the iCreBell, then the white light indicator will flash rapidly.



13

Operations Add doorbell in iCreBell account

6. Show you how to scan the QR code



14

Operations Add doorbell in iCreBell account

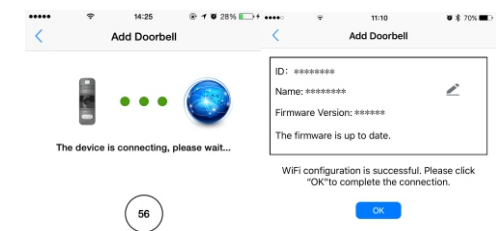
7. Establish the connection
Scan the QR code and establish the Wi-Fi connection.
Please wait the blue light indicator flashes slowly after you hear a cheerful music, then press **Next**.



15

Operations Add doorbell in iCreBell account

8. Wait for the iCreBell to connect with network
9. Press **OK** to complete the connection.



16

Note: Please reset the doorbell and scan the QR code again if can not see the blue light indicator flash slowly.